



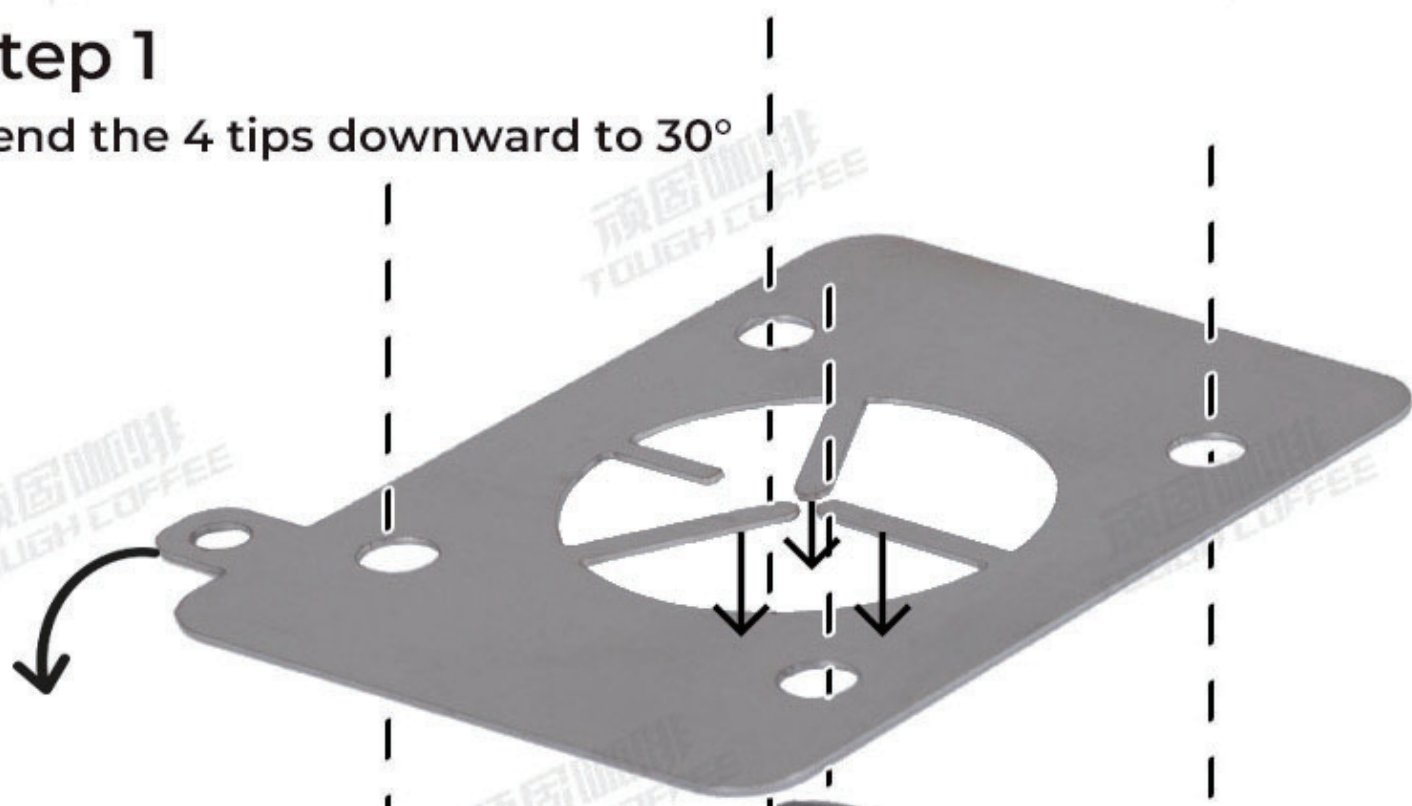
BLUE COTTAGE COFFEE

Mostly Melbourne
Handpicked Goodies!

顽固咖啡
TOUGH COFFEE

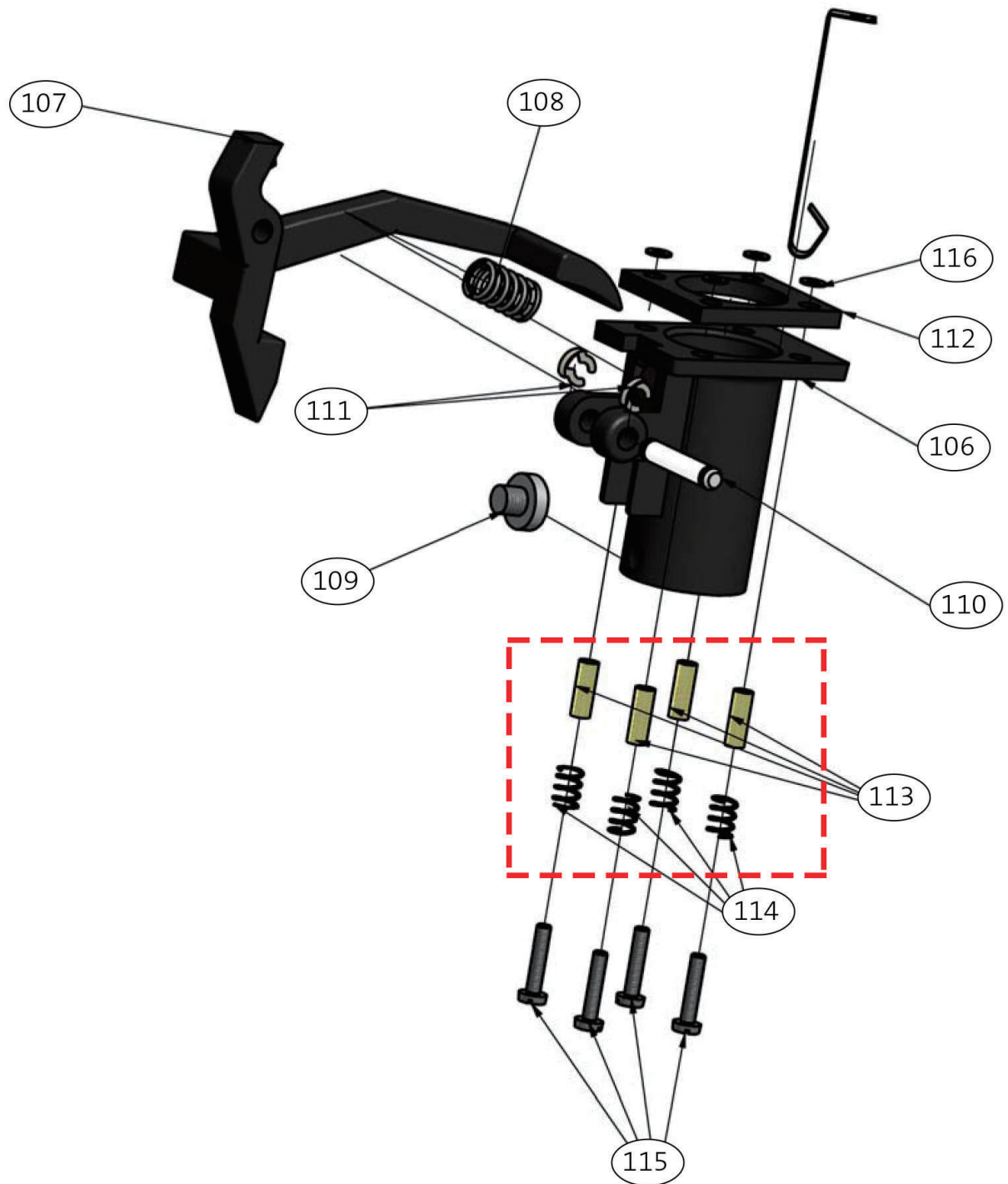
Step 1

Bend the 4 tips downward to 30°



Step 2

Remove the 4 Screw holders (113)
and 4 springs (114) from the EK43 bag holder assembly

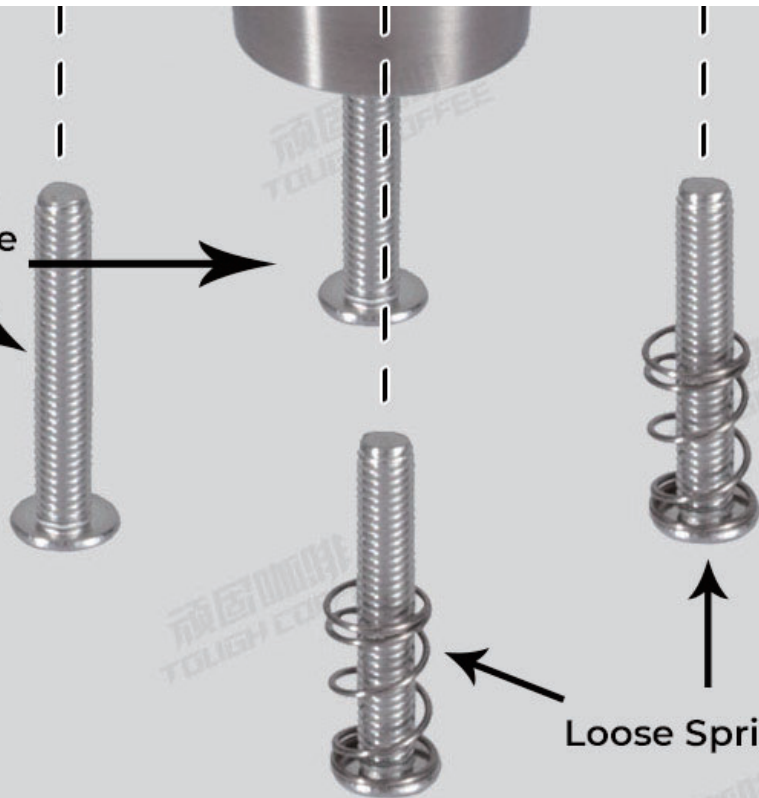


Step 3

Fit the 3 main body parts: Holder Frame, Chute Shaker and Delivery Chute into an assembly by aligning the screw holes



Tight Springs fit here



Loose Springs fit here

Step 4

Prepare the screws:

Fit 4 Screw Holders (113) from EK43

Fit 2 tight screws (114) from EK43 on two screws closer to the machine

Fit 2 loose screws on the 2 screws further away from the machine

Step 5

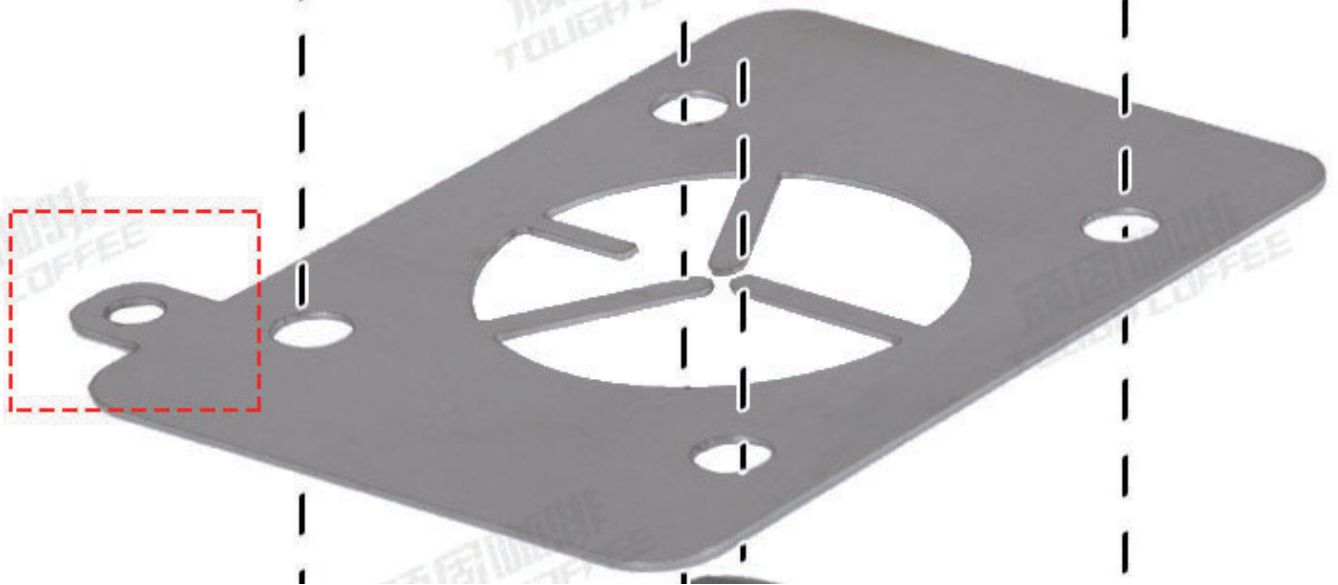
Complete the assembly on the EK43 machine

by screwing in the four screws into where the bag holder was



Step 6

Hook up the Anti-static chain to the hole on the Anti-static plate, hook up the other end to the grounded nut on the side of EK43



BLUE COTTAGE
COFFEE